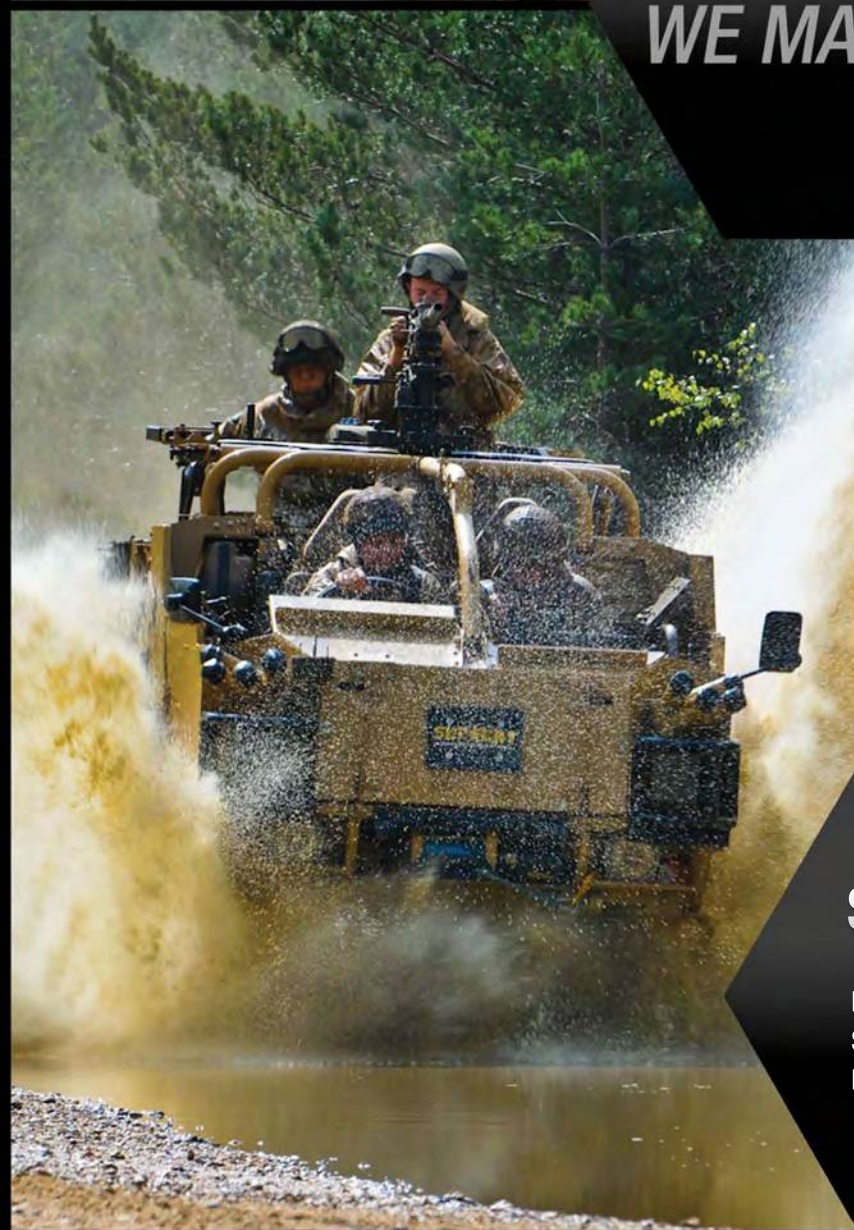


# WHITELAND

ENGINEERING LTD



YOU DESIGN **IT**  
WE MAKE **IT**



## Sub Contract Machining Specialists

PRECISION SUB-CONTRACT MECHANICAL ENGINEERING, MACHINING SERVICES, INCLUDING CNC MACHINING, TOOLMAKING AND SPECIALISED MECHANICAL ASSEMBLIES, ALL TO CUSTOMER SPECIFICATIONS.

# Whiteland Engineering Ltd

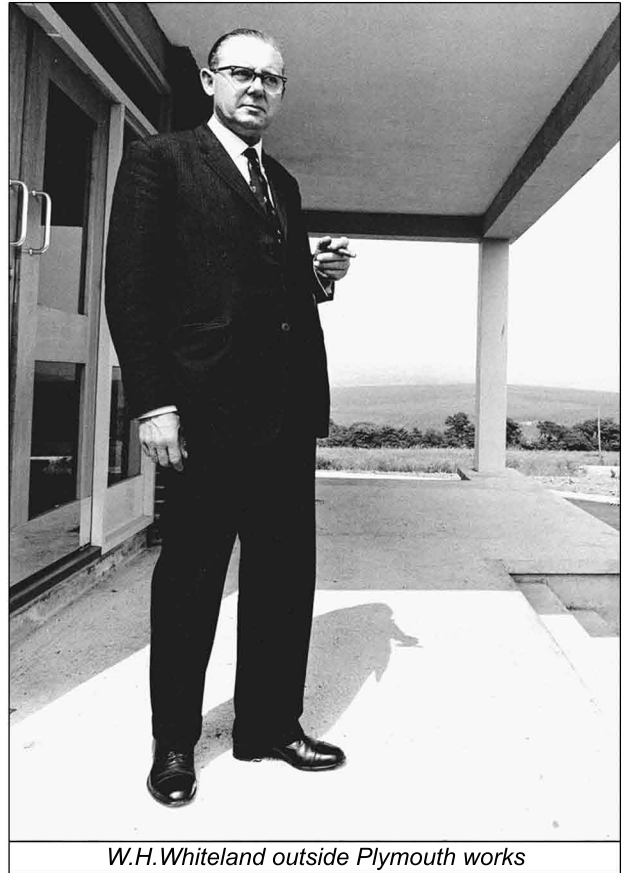
Whiteland Engineering Ltd, Since 1956...

Whiteland Engineering Ltd was founded in 1956 by Walter Hanson Whiteland and over 50 years later is still a family run business with the third generation maintaining the family tradition.

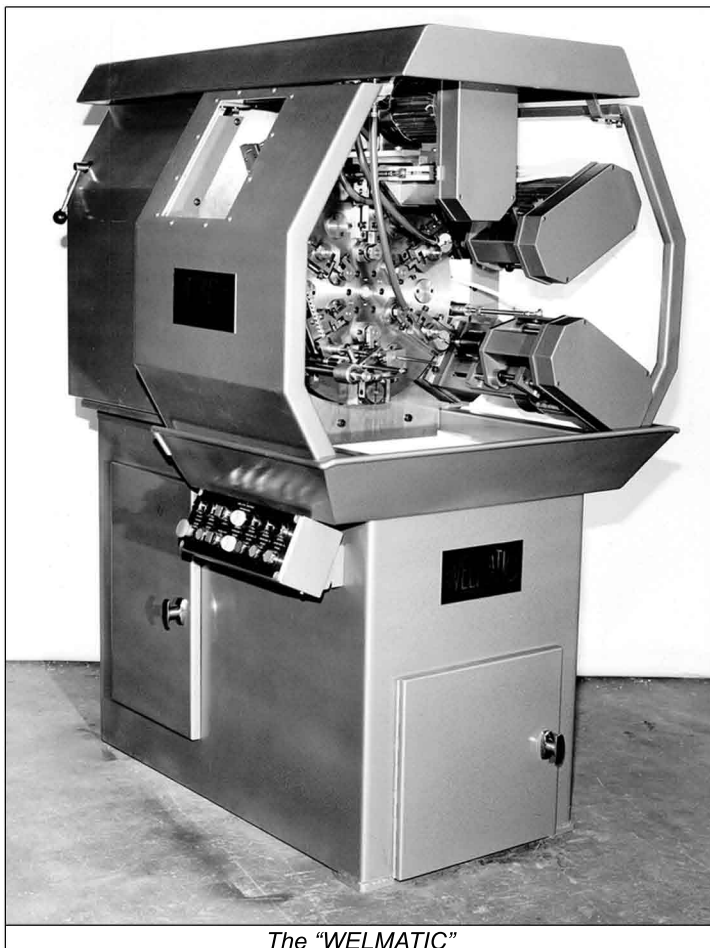
The company initially designed and built Special Purpose Machines, so it is well aware of the accuracy required to manufacture high tolerance components. The company now concentrates its efforts in the field of sub-contract machining services, toolmaking, precision components and mechanical assemblies for firms and organisations with their own range of products.

Over the years we have worked on many different projects, servicing a variety of industries including the following:- M.O.D., Printing and Packaging Manufacturers, Rail, Automotive, Oil & Gas, Alternative Power Generation, Pumps & Compressors, Aerospace, Marine, Medical, Motor Sport, Tobacco and Specialised Vehicle Builders.

Our company has a well equipped machine shop and is always looking to expand and upgrade its facilities by investing in the latest high technology equipment. Together with a highly skilled work force of approximately 30 employees, the company is well placed to develop future business opportunities.



*W.H. Whiteland outside Plymouth works*



*The "WELMATIC"*

The inspection facilities reflect the importance the company gives to this key part of the manufacturing process. It can boast a fully equipped inspection area with a 3-axis co-ordinate measuring machine as the centre-piece.

The company is a member of the "Gauge & Toolmakers Association" and is a fully accredited ISO 9001 company which is approved by Lloyd's Register Quality Assurance Limited.

The SC21 journey is well under way with a commitment to improve and sustain levels of performance throughout the company. The defence and aerospace industries see SC21 as a class-leading standard, creating supply chain excellence.

Our core objective is customer satisfaction "By producing the right product, at the right price, at the right time".

D.W. Whiteland  
Chairman

# Our Philosophy

About The Services We Provide...



Whiteland Engineering Ltd prides itself on building and evolving relationships with all our suppliers and customers, this ensures the continued growth of our business.

Our professionalism coupled with a sound grasp of advances in machining technology allows us to deliver a world class solution.

We don't just produce parts we provide an engineering support service to help you develop the best component solution for your business. We believe that we have all the attributes to deliver a complete engineering service.

Our skilled machinists have experience of working in a wide variety of materials including steel, stainless steel, aluminium, brass, phosphor bronze, cast iron and various other materials, providing bespoke parts for a multitude of industries.

We can supply one-off precision machined prototypes through to volume production.

We offer reduced lead times to support your business, due to flexible working arrangements and our own transport facilities.



We support the following industries:

- Aerospace
- Alternative Energy
- Defence
- Marine
- Medical
- Motor Sport
- Oil & Gas
- Printing & Packaging
- Pumps & Compressors
- Rail
- Tobacco



Our services include:

- Precision machining in large and small batches
- Specialised mechanical assemblies including hydraulic & pneumatic units
- Special purpose machine tool components
- Complete assemblies of jigs, tools & fixtures of all types including gauges
- Workshop plant repairs
- Spares for various types of machinery
- Reverse engineering & manufacture complete to customer specification
- Component inspection:
  - First Article Inspection Reports (FAIR)
  - 100% inspection

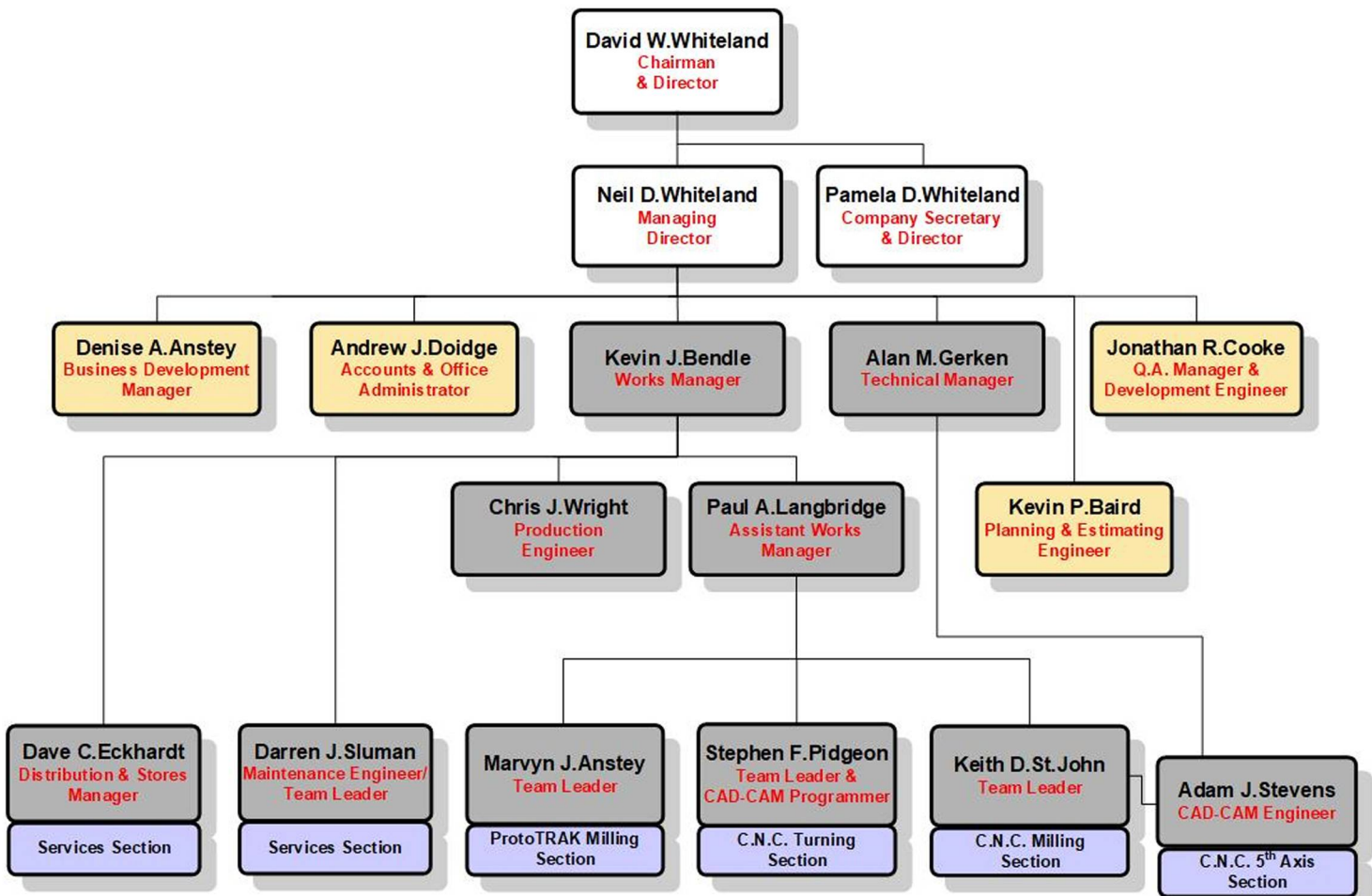
**WHITELAND**  
ENGINEERING LTD

# The Organisation

Whiteland Engineering's Hierarchy



The Whiteland Engineering Ltd organisation is divided into three classifications: Directors, Production and Support. The diagram below shows how the organisation functions and highlights the roles played by the key employees amongst our valued team.



## KEY:

- Directors
- Production
- Support



# CNC Machining

Computer Numerically Controlled



Whiteland Engineering Ltd has over 30 years of CNC machining experience and has worked with a wide variety of materials including steel, stainless steel, aluminium, brass, phosphor bronze, cast iron and various other materials.

Recently we have installed new 3 and 4th axis Hurco CNC machining centres. These have now given us the capability of 3D mould and ergonomic shapes which has brought Whiteland Engineering to the cutting edge of technology enabling us to be even more competitive in the marketplace. These CNC machining centres are fitted with the latest part probing and laser probing.

Whiteland Engineering is also skilled in CNC Turning, CNC Grinding, Cylindrical Grinding and Prototrak Milling.

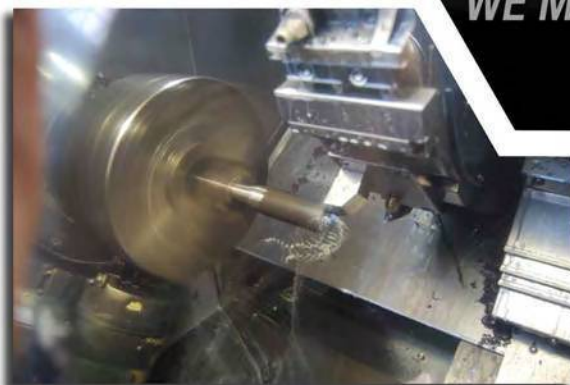
Our latest investment is a new XYZ Proturn SLX555 Lathe which has a 560mm swing, 1,750mm between centres and a 780mmØ face plate.

We can also design and manufacture jigs as necessary to facilitate the required work holding for specific components or extrusions.

We pride ourselves on delivering world class machining services specialising in high end precision components. Whatever your requirement, we will ensure the method of manufacture is efficient and optimised.



YOU DESIGN  
WE MAKE IT



Whiteland Engineering Ltd can offer all of the following services:

- CNC Milling
- CNC Turning
- CNC Cylindrical Grinding
- Fabrications
- Assembly
- Fitting
- Conventional Turning
- Conventional Milling
- Conventional Cylindrical Grinding
- Conventional Surface Grinding
- Drilling
- Honing

**WHITELAND**  
ENGINEERING LTD

# Machines And Capabilities

Whiteland Engineering's Machine List And Maximum Dimensions



MILLING

## C.N.C. 5 AXIS MACHINING

**Hurco VMX42SR** - 5 Axis Machining Centre, 40 A.T.C. with a WinMax Control Complete with Horizontal Rotary C Table 600mmØ & Swivel Head.  
1,525mm x 660mm x 610mm (60" x 26" x 24")

**Hurco VMX50 HT** - 5 Axis Machining Centre, 24 A.T.C. (WinMax Control), Complete with Integrated Nikken 4th/5th Axis Rotary Table, Face Plate 200mmØ.  
1,270mm x 660mm x 610mm (50" x 26" x 24")

## C.N.C. MACHINING

**Hurco VMX60m** - Bed Type Machining Centre, 24 A.T.C. with a WinMax Control Complete with 4th Axis Hurco CNC 320mmØ Rotary Table.  
1,500mm x 660mm x 610mm (59" x 26" x 24")

**Hurco VMX50m (x2)** - Bed Type Machining Centre, 24 A.T.C. with a WinMax Control Complete with 4th Axis Hurco CNC 320mmØ Rotary Table & Through Coolant Spindle.  
1,270mm x 660mm x 610mm (50" x 26" x 24")

**Hurco VMX42m** - Bed Type Machining Centre, 24 A.T.C. with a WinMax Control  
1,066mm x 610mm x 610mm (42" x 24" x 24")

**Hurco VM10i** - Bed Type Machining Centre, 20 A.T.C. with a WinMax Control  
760mm x 400mm x 500mm (30" x 16" x 20")

## C.N.C. VERTICAL

**XYZ 1100HD** - Bed Type Machining Centre, 30 A.T.C.  
(Siemens 828D ShopMill Control)  
1,100mm x 610mm x 610mm (43" x 24" x 24")

**XYZ Prototrak SM5000 (x2)** - 3 Axis Bed Mill  
1,500mm x 596mm x 584mm (59" x 23.5" x 23")

**XYZ Prototrak SMX4000 (x2)** - 3 Axis Bed Mill  
1,016mm x 508mm x 584mm (40" x 20" x 23")

**XYZ Prototrak PRO3000/KRV3000** - 2 Axis Turret Mill  
1,016mm x 400mm x 400mm (40" x 16" x 16")  
Slotting capabilities - 100mm x 910mmØ (4" x 36"Ø)

TURNING

## C.N.C.

**CMZ TA-30-YS-1100** (Driven Tooled, Fanuc Control System)  
1,100mm swing x 80mm centres (43" x 3")

**Mazak Quick Turn NEXUS 350-MY (Driven Tooled)**  
420mmØ x 1,500mm centres (16.5"Ø x 59") + Steady

**Mazak Quick Turn NEXUS 250-2**  
350mmØ x 1,000mm centres (13.8"Ø x 39.8")

**Mazak Super Quick Turn 250**  
350mmØ x 480mm centres (13.7"Ø x 19.9")

**Proturn SLX555**  
560mm swing x 1,750mm centres & 780mmØ face plate (22" x 69" x 31")

**Proturn RLX1630**  
400mm swing x 650mm centres (16" x 30")

**WHITELAND**  
ENGINEERING LTD

# Machines And Capabilities

Whiteland Engineering's Machine List And Maximum Dimensions



GRINDING

## C.N.C. CYLINDRICAL

### Jones & Shipman Suprema (x2)

300mm swing x 650mm centres (12"x 25"), Max Diameter: 300mm (11.7")

## CYLINDRICAL

### Jones & Shipman 1307 (x2)

355mm swing x 1,016mm centres (14"x 40"), Max Diameter: 355mm (14")

### Jones & Shipman 1071

152mm swing x 455mm centres (6"x 18"), Max Diameter: 152mm (6")

## SURFACE

**DELTA Synthesis 1100/600** - Horizontal Spindle M/C  
1,100mm x 600mm x 500mm (43" x 23" x 20")

**Jones & Shipman 540L** - With Digital Opti-dress  
457mm x 152mm x 354mm (18" x 6" x 14")

ELECTRO

## E.D.M MACHINING

### Excetek V650G CNC Wire Erosion

Size of Component: 1,100mm x 750mm x 345mm

### Charmilles Form 2LC Spark Erosion (Including Orbiting Head)

Table Size: 500mm x 350mm, Travels X: 300mm Y: 200mm Z: 200mm,  
Max Workpiece Weight: 500kg

OTHER

## OTHER FACILITIES

Comprehensive Fitting & Assembly Area

Hot Chemical Blacking (250mm (W) x 800mm (L) x 600mm (D))

Vapour Blasting (1,000mm(W) x 700mm(L) x 700mm (H))

Aqua Blasting (1,500mm (W) x 1,000mm (L) x 800mm (D))

Wet Spraying Booth (3,000mm(W) x 6,000mm(L) x 2,500mm(H))

Small Component Washing Facilities

Dot Peen Part Marking

Cutter Grinding

## WELDING FACILITIES

M.I.G.

Kemwelder 1V Welding System

**WHITELAND**  
ENGINEERING LTD





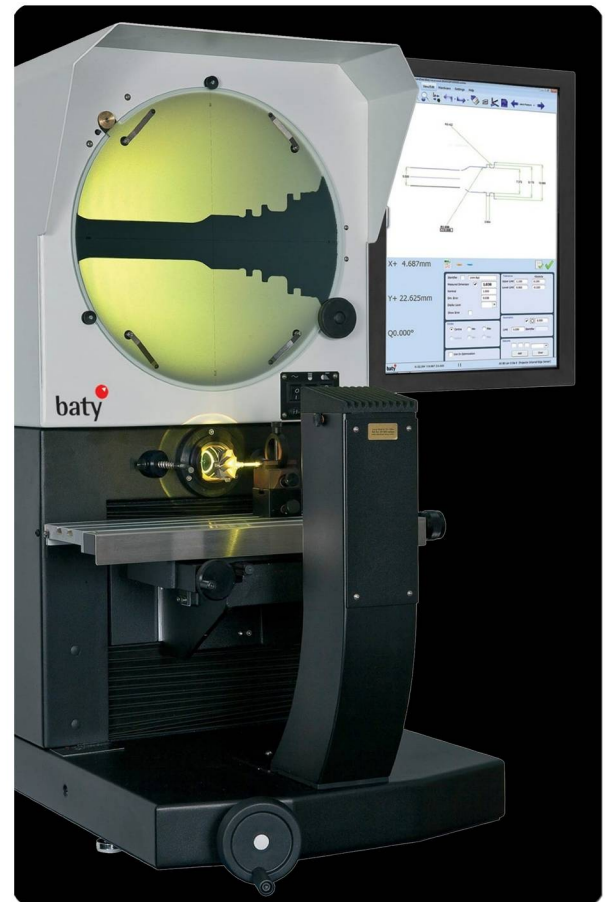
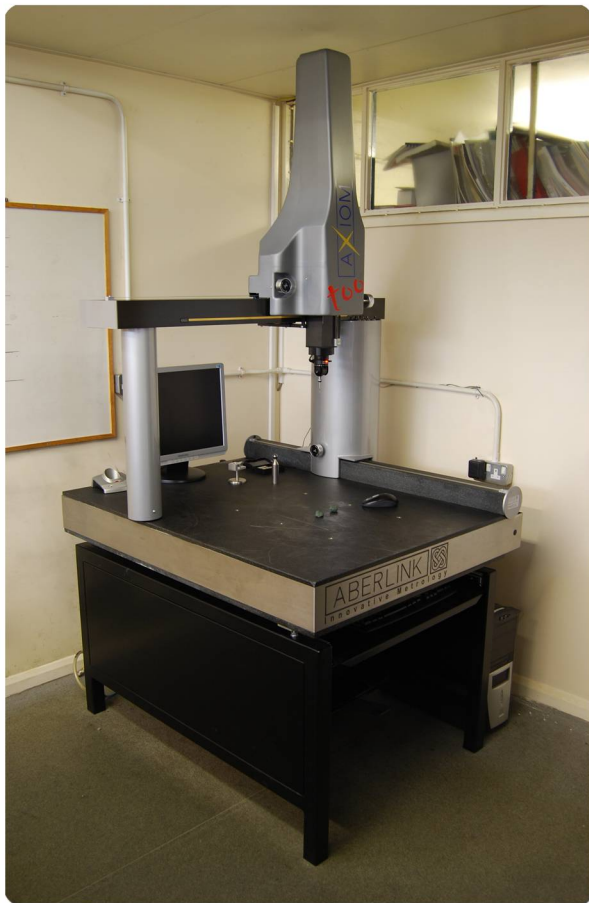
# Inspection Facilities

Quality Inspection Control



## Advanced Inspection Equipment:-

- CNC Axiom Too C.M.M. - 640mm x 900mm x 500mm (25" x 35.5" x 20" Approx.) - With Camera & Light Tube
- Mitutoyo Euro-M544 Manual C.M.M. - 640mm x 600mm x 500mm (25" x 24" x 20" Approx.)
- Trimos Vertical 3 (x4) - Linear Measurement up to 1,100mm (43"), Diameter up to 1,000mm (39")
- Mitutoyo Vernier Caliper - 1,800 (6')
- Mitutoyo Surftest SJ-410 Surface Tester - 0.1 $\mu$ m to 10 $\mu$ m (0.3 $\mu$ m to 300 $\mu$ m)
- Baty R14 Shadowgraph - With Aberlink software



**WHITELAND**  
ENGINEERING LTD

# Questions And Answers

Your Frequent Asked Questions And Answers

Below are some questions that are frequently asked. If you would like to ask a different question or wish to make an enquiry, you can contact us via the following methods:

Telephone: +44 (0)1237 472203  
Fax: +44 (0)1237 472205  
Email: [enquiries@whitelandengineering.co.uk](mailto:enquiries@whitelandengineering.co.uk)  
Website: [www.whitelandengineering.co.uk](http://www.whitelandengineering.co.uk)

**Q** We have noticed from your capabilities list that you do not supply gear cutting, heat treatment, finishing processes and other specialised machining processes. Are you able to provide these services as well?

**A** Yes, we are able to provide a finished part as we have a network of approved and preferred suppliers in all areas.

**Q** Are you able to provide 100% inspection on all parts produced with supporting documentation?

**A** Yes, we have a fully equipped Inspection Department which we utilise to your specific inspection requirements.

**Q** Are you able to manufacture quick turnaround work?

**A** Yes, we have the facility to offer this service.

**Q** Does our geographical location restrict us from using your services?

**A** No, we can deliver anywhere in the UK either by using our own vehicles or professional freight couriers. We also use Global Forwarding and Freight companies for international deliveries.

**Q** Can you give general advice on a new product design that we need manufacturing?

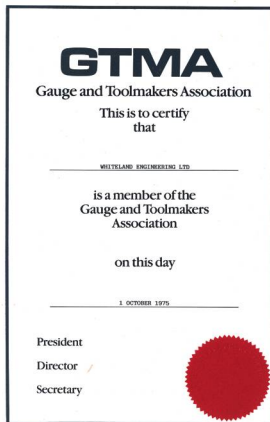
**A** Yes, we have over 50 years of general engineering experience and we are only too pleased to share our knowledge with you.

**WHITELAND**  
ENGINEERING LTD

# GTMA

Gauge And Toolmakers Association

# GTMA



GTMA members are companies involved in Design, Production, Measurement and Maintenance within the Gauge, Toolmaking and Precision Machining Industries encompassing:-

- Mould & Die Making
- Press Toolmaking
- Precision Machining
- Metrology
- Tooling Technologies
- Rapid Product Development

The GTMA works hard to deliver the best of UK Gauge, Toolmaking and Precision Machining expertise to industry as a whole, providing a focal point for technology transfer and benchmarking its members against overseas competition.

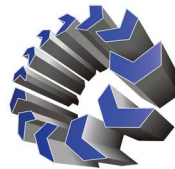
In partnership with its members, the GTMA offers a quality guarantee to buyers of toolmaking and associated services, in addition to support, information and networking opportunities.

Whiteland Engineering Ltd has been a member of the GTMA since October 1975; our first certificate can be seen in the image above.

You can find out more about the GTMA on the web by visiting [www.gtma.co.uk](http://www.gtma.co.uk)

# DATAHUB

Designed By Engineers For Engineers



# DATAHUB™

DESIGNED BY ENGINEERS FOR ENGINEERS

DATAHUB is the adaptable software solution for all businesses large and small. Our Enterprise Resource Planning (ERP) and Administration software is used to manage all aspects of your business from planning through to accounting offering a user friendly functionality on all modules of the DATAHUB package.

Our software developers provide all companies with the right tools to succeed. We are able to provide bespoke software solutions to any business wanting a software system tailored to their own specification. Originally our software was designed to manage and control the sub contract machining business of Whiteland Engineering Ltd.

Due to the success and the continued development of the engineering software, it is now being used in a range of industries outside the field of engineering.

DATAHUB helps users:

- Save Time
- Reduce Costs
- Build Relationships
- Increase Productivity
- Improve Performance & Profits

You can visit DATAHUB on the web at [www.wesldatahub.co.uk](http://www.wesldatahub.co.uk)

# WHITELAND

ENGINEERING LTD

---

# Certificate of Approval

This is to certify that the Management System of:

## Whiteland Engineering Ltd

Unit 5 Alverdiscott Road Industrial Estate, East-The-Water, Bideford, EX39 4LQ, United Kingdom

has been approved by LRQA to the following standards:

### ISO 9001:2015

Approval number(s): ISO 9001 – 0004310

#### The scope of this approval is applicable to:

Provision of subcontract mechanical engineering, machining services, including CNC machining, toolmaking and specialised mechanical assemblies, all to customer design specifications.

**Marta Escudero**

---

Regional Director, United Kingdom and Americas (UKAM)

Issued by: LRQA Limited



# Portfolio Of Work

A Selection Of Machined Components And Assemblies





[www.whitelandengineering.co.uk](http://www.whitelandengineering.co.uk)



[enquiries@whitelandengineering.co.uk](mailto:enquiries@whitelandengineering.co.uk)



+44 (0)1237 472203



+44 (0)1237 472205

